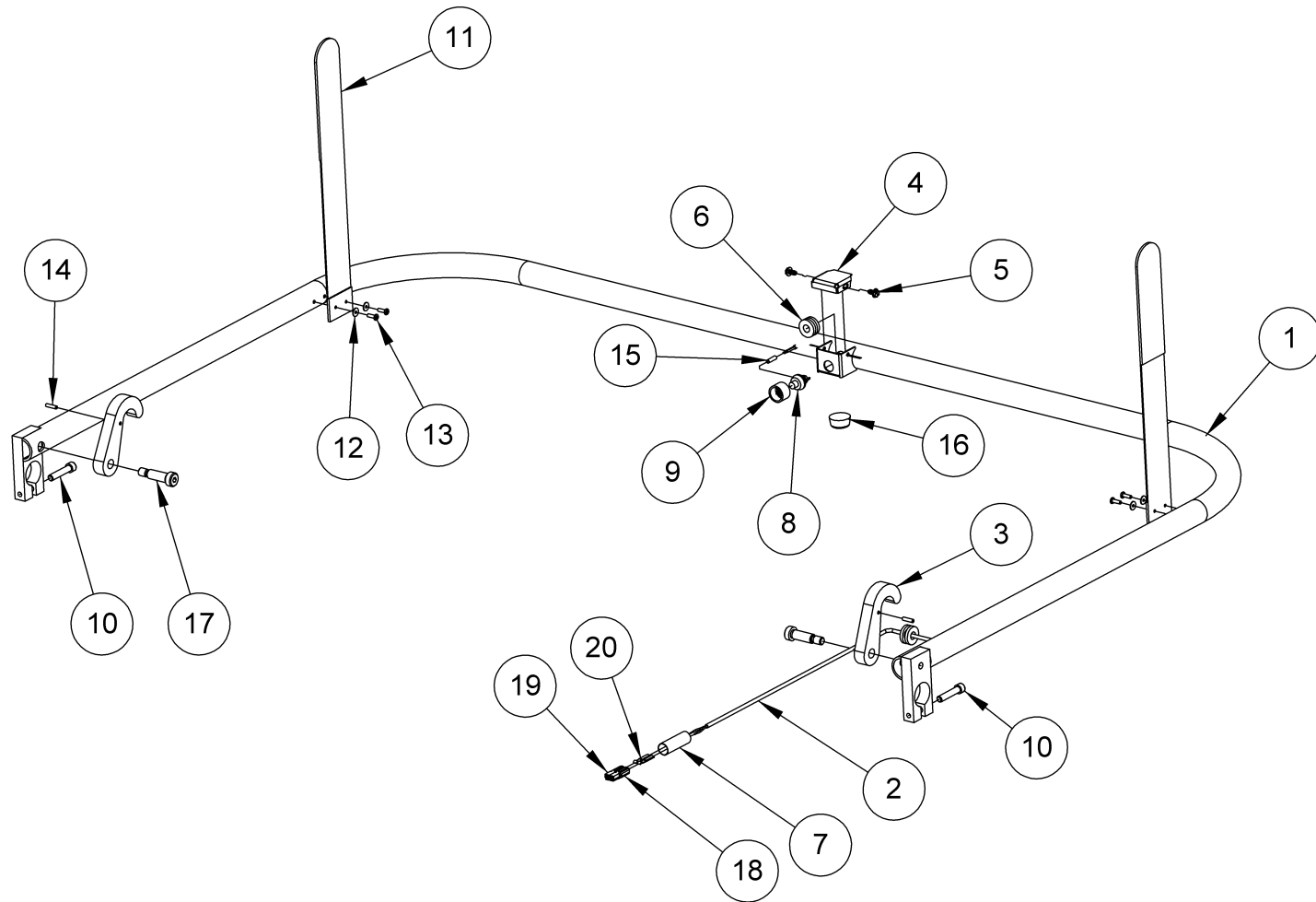


**294-002-416  
HANDLE ASSEMBLY**



**294-002-416**  
**HANDLE ASSEMBLY**

	<b>PART NO.</b>	<b>DESCRIPTION</b>	<b>QTY</b>
1	294-002-083	HANDLE WELDMENT	1
2	02-307	WIRE, 2 COND, SHIELDED, 22 AWG	53"
3	294-002-027	CATCH ARM	2
4	A-0448	HANDLE SWITCH BOX COVER	1
5	01-058	SCREW, #8 X 3/8 WASHER-HEAD SELF-TAPPING	2
6	04-078	RUBBER GROMMET	2
7	02-208	HEAT SHRINK TUBE, 1/2 ID	1.5"
8	02-335	SWITCH	1
9	A-1028	START SWITCH COVER	1
10	810-349-200	CAP SCREW, 1/4-20 X 1 1/4 HEX SOCKET HEAD, w/NYLON PELLETT	2
11	04-397	CORD STRAP	2
12	01-303	FLAT WASHER	4
13	01-130	POP RIVET, 1/8 X 1/2, ALUMINUM	4
14	01-152	ROLL PIN, 1/8 X 1/2	2
15	02-563	HEAT SHRINK TUBE, 1/8 ID	0.5"
16	04-484	RUBBER BUMPER	1
17	01-310	BOLT, 1/4-20 X 1-1/4, HEX SOCKET	2
18	02-792-1	MODULAR CONNECTOR, BLACK	1
19	02-792-8	MODULAR CONNECTOR, WHITE	1
20	02-793	CONTACT, 15 AMP	2