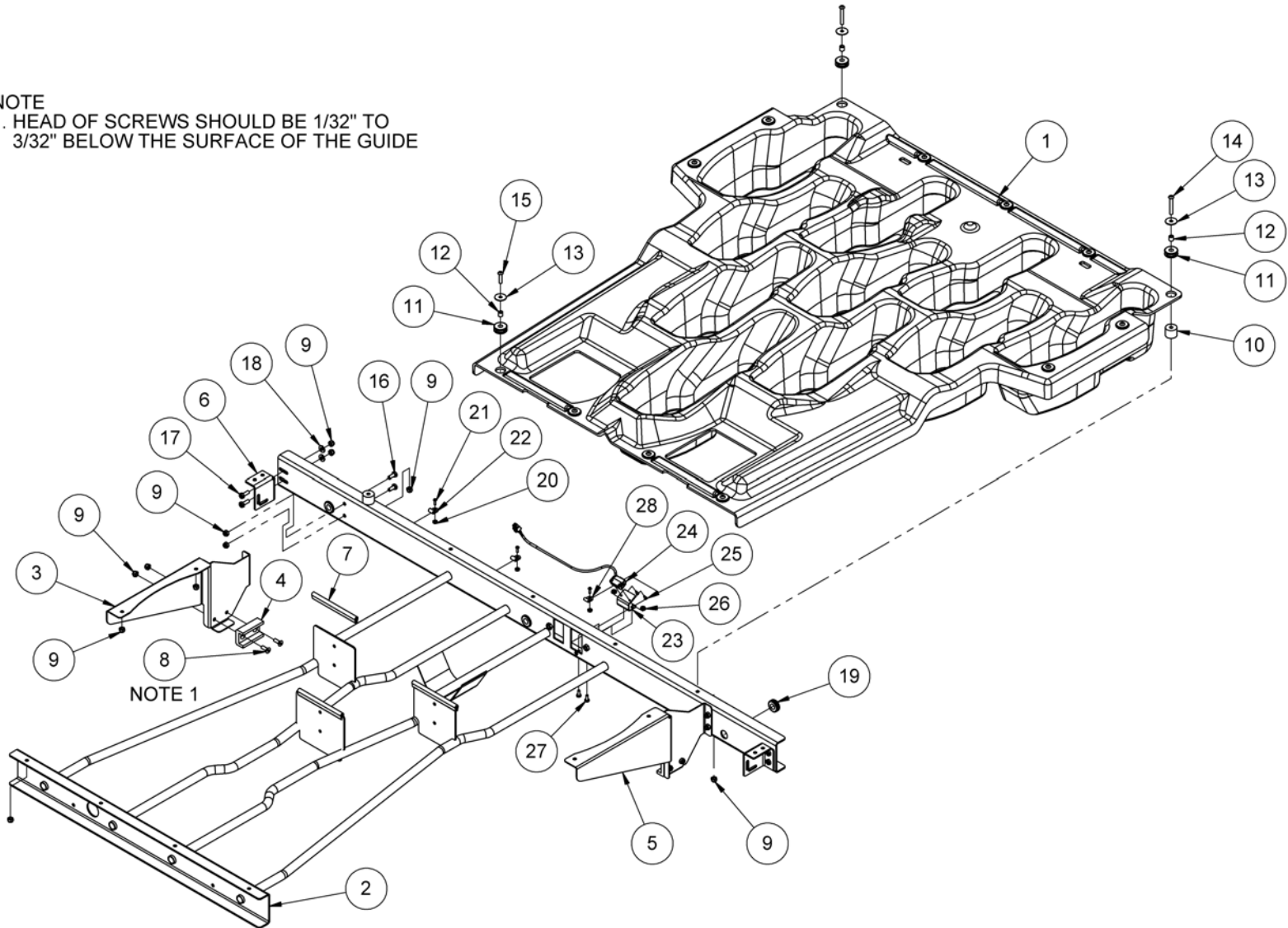


# DURABIN II ASSEMBLY

NOTE  
1. HEAD OF SCREWS SHOULD BE 1/32" TO  
3/32" BELOW THE SURFACE OF THE GUIDE





## DURABIN II ASSEMBLY

ITEM	QTY	PART #	DESCRIPTION	ITEM	QTY	PART #	DESCRIPTION
1	1	088-000-259	DURABIN II w/OPTICAL BIN SWITCH	27	2	818-240-082	SCREW, PAN HEAD, 10-32 X 1/2, SEMS
2	1	088-001-601	DURABIN II FRAME WELDMENT	28	1	744-107-013	CLAMP, NYLON, 1/8
3	1	088-001-607	DURABIN II SHUTTLE SUPPORT, 7-SIDE				
4	2	088-001-603	SHUTTLE REAR SUPPORT GUIDE				
5	1	088-001-610	DURABIN II SHUTTLE SUPPORT, 10-SIDE				
6	2	088-001-634	REAR SAFETY SUPPORT BRACKET				
7	3	088-001-264	BIN FRAME EDGE TRIM				
8	4	808-849-120	SCREW, SOCKET FLAT HEAD, 1/4-20X3/4				
9	25	839-549-002	NUT, HEX, 1/4-20				
10	2	088-001-605	HAT REPLACEMENT SPACER				
11	13	711-512-040	GROMMET, 3/8X7/8X1/4				
12	13	088-001-604	SPACER, .25X.375X.375, STEEL				
13	13	070-007-192	WASHER, 1/4X1.00X.05				
14	2	808-549-285	SCREW, BUTTON HEAD, 1/4-20X1-3/4				
15	11	808-549-160	SCREW, BUTTON HEAD, 1/4-20X1				
16	4	809-849-100	SCREW, HEX, 1/4-20X5/8				
17	4	809-849-125	SCREW, HEX, 1/4-20X3/4				
18	4	948-753-102	WASHER, A-N FLAT, 1/4				
19	3	711-516-020	GROMMET, 1-1/16X1/2X3/8				
20	4	843-127-002	NUT, KEPS, 6-32				
21	2	818-227-082	SCREW, PHILIPS PAN HEAD, 6-32X1/2				
22	2	744-107-016	CLAMP, NYLON, 3/16				
23	1	088-000-226	OPTICAL SWITCH BRACKET				
24	1	088-000-245	OPTICAL SENSOR ASSEMBLY				
25	2	863-030-080	SCREW, PAN HEAD, M3 .5 X 8 MM				
26	2	843-140-002	NUT, 10-32, KEPS				